

4.6 Cleaning

4.6.1 Cleaning the system exterior

If the system cover or the touch screen becomes stained, wipe them with a soft cloth. For severe stains, wipe it off with a soft cloth dampened with neutral detergent diluted with water and wrung well, then dry the wet part with a soft cloth.

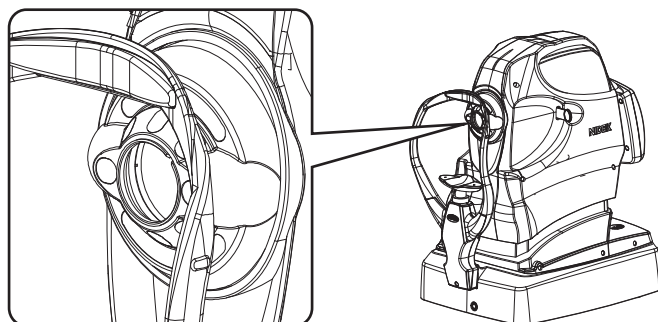
CAUTION

- Do not use any organic solutions such as thinner or alcohol.
- Wipe the touch screen gently with soft cloth. Never press hard objects against or place magnetic objects near the LCD monitor.
The touch screen may become damaged. In addition, malfunction of the system may result.
- Do not wipe the LCD monitor with a sponge or cloth soaked with a large amount of liquid.
If liquid enters the system, the system may fail.

4.6.2 Cleaning the objective lens

Fingerprints or dust on the objective lens compromises the quality of captured images. Check the objective lens for cleanliness before image capture. If necessary, clean it with the procedure below.

- 1 Remove dust on the objective lens with a blower.



- 2 Wrap lens cleaning paper around a thin stick such as a chopstick (or cotton swab), and moisten it with a small amount of methanol or alcohol. Then use it to wipe the objective lens.

Note

- Do not use a metal or hard stick. Use one that will not scratch the lens.
- Wipe lightly from the center of the lenses to the outside in a circular motion.
- Do not use rubbing alcohol to clean the lenses.

If the coating on the lenses is removed, images may not be captured properly.

- 3 Check if the lens is clean. If soiled areas remain, clean the lens again with new cleaning paper.

4.6.3 Cleaning the anterior segment adapter (optional)

Fingerprints or dust on the anterior segment adapter compromises the quality of captured images. Check the lenses for cleanliness before image capture. If necessary, clean them.

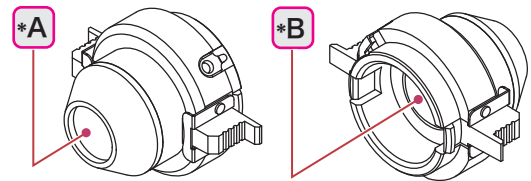
CAUTION

- The anterior segment adapter or its peripheral parts may come into contact with the patient's eye-lashes. If the anterior segment adapter is used for patients with any infectious disease, be sure to clean the anterior segment adapter after image capture with cotton swab moistened with alcohol.

Secondary infection may result.

1 Remove dust on the lenses with a blower.

The anterior segment adapter is equipped with two lenses: one at the tip (*A), and the other inside (*B).



2 Wrap lens cleaning paper around a thin stick such as a chopstick (or cotton swab), and moisten it with a small amount of methanol, absolute alcohol, or rubbing alcohol. Then use it to wipe the lenses.

Note

- Do not use a metal or hard stick. Use one that will not scratch the lenses.
- Wipe lightly from the center of the lenses to the outside in a circular motion.

3 Check if the lenses are clean. If soiled areas remain, clean the lenses again with new cleaning paper.

4.7 List of Consumables

Product name	Product number	Remarks
Chinrest paper	32903-M047	1 stack
Magnetic forehead rest pad	30611-1520	1 unit Made of ABS resin
Forehead rest pad	15411-M752	1 unit Made of polyester elastomer

* After using the consumables, prepare spare ones.

4.8 Optional Accessories

4.8.1 External fixation lamp

The external fixation lamp is an optional accessory used for patients who are unable to focus on internal fixation lamp properly. The fixation of the eye that is subject to image capture can be stabilized by having the patient focus on the external fixation lamp with the other eye.

○ Preparation

- 1 Attach the external fixation lamp to the system main body.

Tighten the knob securely.

- 2 Connect the cable of the external fixation lamp to the system main body.

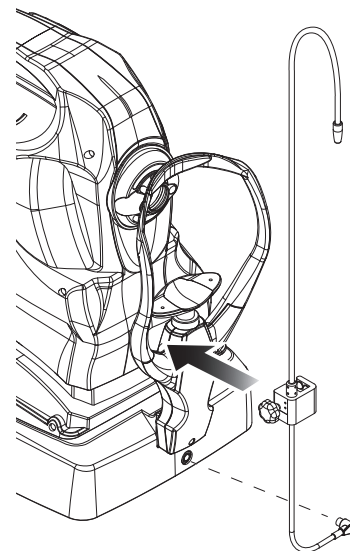
Turning on power to the system main body makes the external fixation lamp blink.

○ Operating procedure

- 1 Give instructions to the patient.

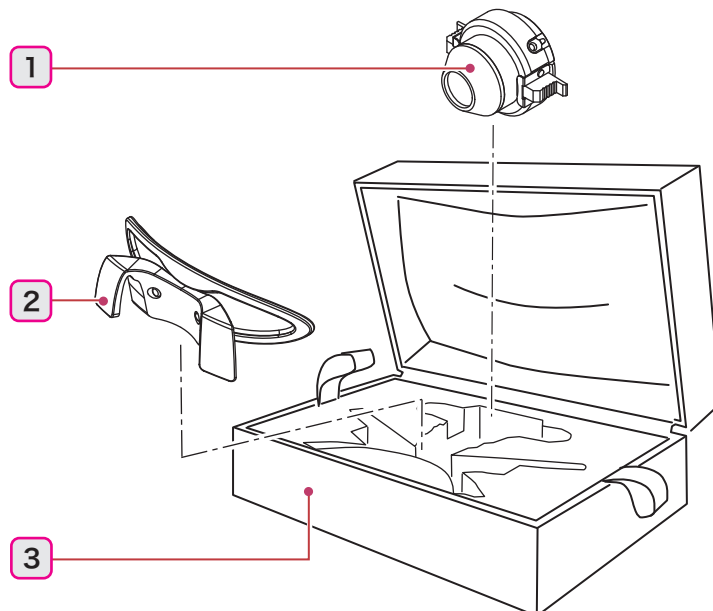
“Focus on the external fixation lamp with the eye not looking into the device for image capture. Open both of your eyes wide open and focus on the blinking red lamp. Refrain from blinking as much as possible.”

- 2 Move the external fixation lamp to guide the patient's eye to the desired position.



4.8.2 Anterior segment adapter

The anterior segment adapter is attached over the objective lens of the system main body to capture anterior segment cross-sectional images. It is removed for retinal cross-sectional image capture and color fundus image capture.



1 Anterior segment adapter

Lens unit for anterior segment cross-sectional image capture

2 Spacer for anterior segment image capture

It is an accessory of the system main body. It is not included in the anterior segment adapter.

3 Case

To protect the anterior segment adapter and the spacer for anterior segment cross-sectional image capture from being damaged, store them in the case when they are not to be used.

○ Preparation and operating procedure

➡ “3.3.2 Anterior segment cross-sectional image capture (optional)” (page 86)