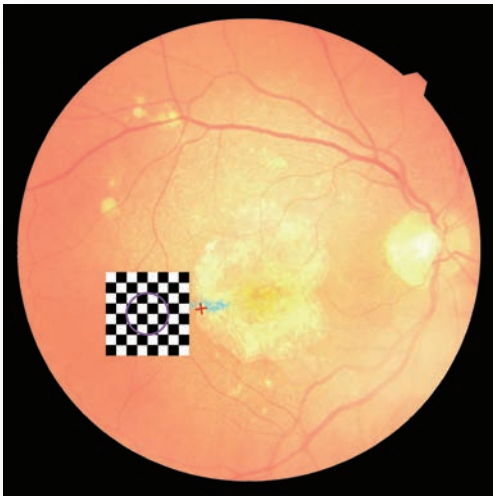


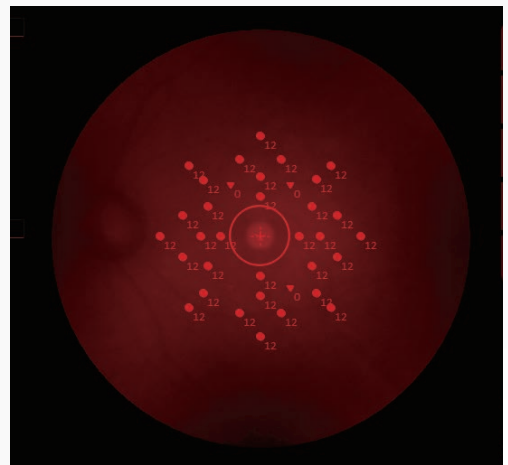
MP-3 *New Features*

The solution for evaluating retinal sensitivity and rehabilitation through peripheral vision training

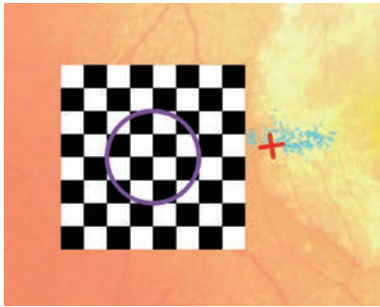


Feedback Exam
for Visual Rehabilitation

Scotopic
Microperimetry



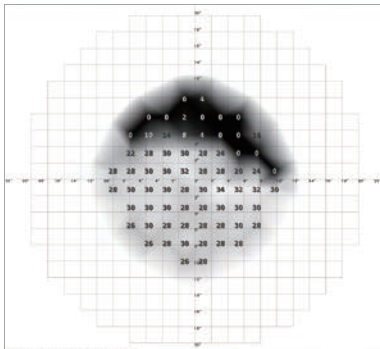
■ **Standard Function**



Feedback Exam

The visual rehabilitation mode trains low-vision patients who have lost foveal fixation to relocate their preferred retinal locus (PRL) to a different region, called the trained retinal locus (TRL). The TRL is predetermined by a physician, and fixation rehabilitation allows the patient better functional vision (i.e. reading speed) due to increased fixation stability and visual outcomes.

Active flickering pattern stimulation and cheery music create an effective and pleasant training experience for the patient.

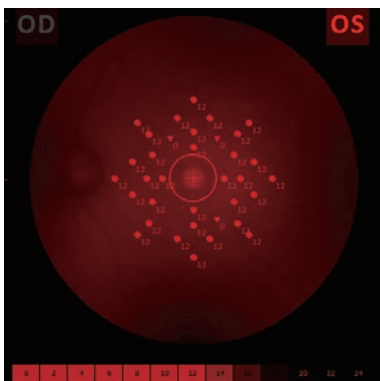


Gray Scale

Visual sensitivity maps can be displayed in gray scale, similar to the conventional visual field reports. This display allows for an intuitive assessment of retinal sensitivity.

■ **Factory-installed Option: MP-3 type S**

Available in countries with CE marking.



Scotopic Microperimetry

Dark-adapted test allows evaluation of rod function under scotopic conditions. Scotopic microperimetry is used to assess the changes in rod sensitivity of degenerative retinal diseases including age-related macular degeneration and some forms of retinitis pigmentosa. This modality can be used in clinical trials of new therapeutics for retinal diseases that impair rod function. The type S provides scotopic microperimetry in addition to the standard functions of the MP-3.



MP-3 type S

Scotopic Microperimetry Specifications

Microperimetry	
Visual field	40°
Background luminance	0.003 asb
Stimuli luminance threshold range	0.303 asb (0 dB) to 0.0042 asb (24 dB) (Contrast: 101 to 0.4)
Stimulus size	Goldman I / II / III / IV / V compatible
Threshold strategy	4-2 / 4-2 (fast) / 4-2-1 / 4-2-1 (fast)
Fixation target	Shape: single-cross, circle, four-crosses, four-lines